

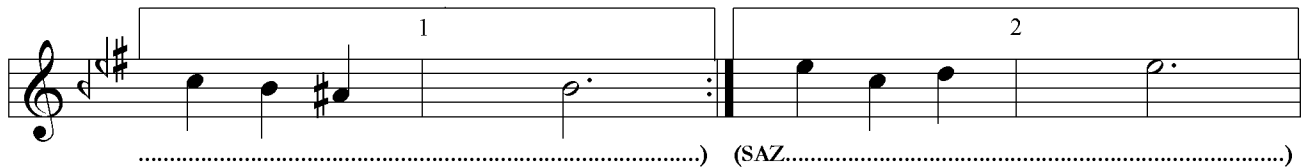
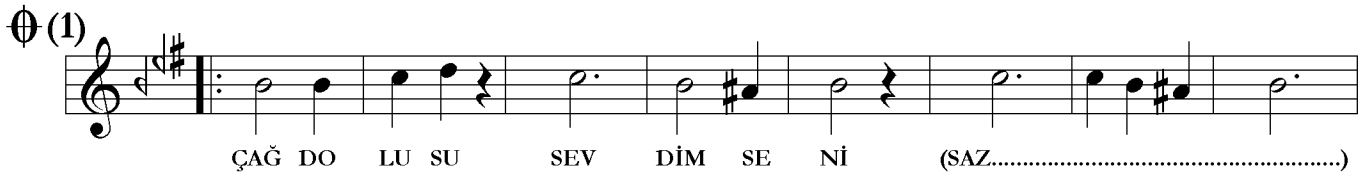
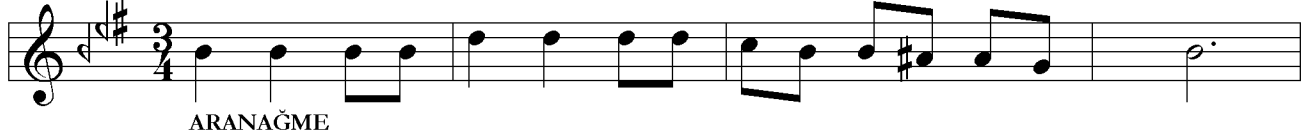
SEGÂH ŞARKI

ÇAĞ DOLUSU SEVDİM SENİ

Müzik: Hüseyin ERBAY
Söz: Ayhan İNAL

SEMÂÎ

♩ = 168



SEGÂH ŞARKI
ÇAĞ DOLUSU SEVDİM SENİ
(2)

[illegible]

Musical notation for the first line of the hymn. The melody is written on a single staff with a treble clef and a key signature of one sharp (F#). The notes are: G4 (quarter), A4 (quarter), B4 (quarter), A4 (quarter), G4 (quarter), F#4 (quarter), E4 (quarter), D4 (half). The lyrics are: KOL LA RI MA A TIL SAN..... DA (SAZ.....)

KAÇ SAN DA BİR..... KAÇ SAN DA BİR (SAZ.....)

[illegible]

The first staff of music is written on a five-line treble clef. It begins with a key signature of one sharp (F#) and a common time signature (C). The melody consists of quarter notes and half notes. Below the staff, the lyrics are aligned with the notes: KOL, LAR, NE KI, (SAZ.....), KOL, LAR, NE KI, (SAZ.....).

$\Phi(2)$

Musical notation for $\Phi(2)$. The melody starts with a treble clef, a key signature of one sharp (F#), and a common time signature (C). It begins with a repeat sign. The notes are: B4 (quarter), C5 (quarter), B4 (quarter), C5 (quarter), B4 (quarter), C5 (quarter), D5 (quarter), E5 (half note). There is a fermata over the E5. Then, F#5 (quarter), G5 (quarter), A5 (quarter), B5 (half note). There is a fermata over the B5. Finally, C6 (quarter), B5 (quarter), A5 (quarter), G5 (half note).

BUR CU BUR CU BİR Çİ ÇEK..... SİN..... (SAZ.....)

SEGÂH ŞARKI
ÇAĞ DOLUSU SEVDİM SENİ
(3)

TÛL LER NE Kİ (SAZ.....) TÛL LER NE Kİ (SAZ.....)

(SAZ.....) (SAZ.....)

(SAZ.....)

GÖZ LE RİM DEN..... HİÇ GİT ME YEN.....

HA YÂL SİN..... SEN..... HA YÂL SİN..... SEN (SAZ.....)

İ ÇİM DE Kİ DER YÂ SİN..... SEN (SAZ.....)

GÖL LER NE Kİ (SAZ.....) GÖL LER NE Kİ (SAZ.....)

(SON)

(SAZ.....) (SAZ.....) Balkancı

*ÇAĞ DOLUSU SEVDİM SENİ, YILLAR NE Kİ.
KANAT KANAT GELDİM SANA, YOLLAR NE Kİ.
KOLLARIMA ATILSAN DA, KAÇSAN DA BİR
HER ZERREMLE SARDIM SENİ, KOLLAR NE Kİ.*

*BURCU BURCU BİR ÇİÇEKSİN, GÜLLER NE Kİ.
İNCECİK BİR KELEBEKSİN, TÛLLER NE Kİ.
GÖZLERİMDEN HİÇ GİTMİYEN HAYÂLSİN SEN
İÇİMDEKİ DERYÂSIN SEN, GÖLLER NE Kİ.*

Ayhan İNAL